

STRAIGHT WAVEGUIDE



Rectangular Straight Waveguide

ELECTRICAL CHARACTERISTICS:

Part No.	WG Type (EIA)	Freq Range (GHz)	VSWR	Standard Length Range...(mm)	Flange	Material
SH-3WAL...PM	WR2300	0.32-0.49	≤ 1.05	0.2-500	FDP/FDM	Al
SH-4WAL...PM	WR2100	0.35-0.53	≤ 1.05	0.2-500	FDP/FDM	Al
SH-5WAL...PM	WR1800	0.41-0.62	≤ 1.05	0.2-500	FDP/FDM	Al
SH-6WAL...PM	WR1500	0.49-0.75	≤ 1.05	0.2-500	FDP/FDM	Al
SH-8WAL...PM	WR1150	0.64-0.98	≤ 1.05	0.2-500	FDP/FDM	Al
SH-9WAL...PM	WR975	0.75-1.15	≤ 1.05	0.2-500	FDP/FDM	Al
SH-12WAL...PM	WR770	0.96-1.46	≤ 1.05	0.2-500	FDP/FDM	Al
SH-14WAL...PM	WR650	1.13-1.73	≤ 1.05	0.2-2000	FDP/FDM	Al
SH-18WAL...PM	WR510	1.45-2.20	≤ 1.05	0.2-2000	FDP/FDM	Al
SH-22WAL...PM	WR430	1.72-2.61	≤ 1.05	0.1-2000	FDP/FDM	Al
SH-26WAL...PM	WR340	2.17-3.30	≤ 1.05	0.1-2000	FDP/FDM	Al
SH-32WAL...PM	WR284	2.60-3.95	≤ 1.05	0.1-2000	FDP/FDM	Al
SH-40WAL...PM	WR229	3.22-4.90	≤ 1.05	0.1-2000	FDP/FDM	Al
SH-48WAL...PM	WR187	3.94-5.99	≤ 1.05	0.1-2000	FDP/FDM	Al
SH-58WAL...PM	WR159	4.64-7.05	≤ 1.05	0.1-2000	FDP/FDM	Al
SH-70WAL...PM	WR137	5.38-8.17	≤ 1.10	0.1-2000	FDP/FDM	Cu
SH-84WAL...PM	WR112	6.57-9.99	≤ 1.10	0.1-2000	FBP/FBM	Cu
SH-100WAL...PM	WR90	8.20-12.40	≤ 1.10	0.1-2000	FBP/FBM	Cu
SH-120WAL...PM	WR75	9.84-15.0	≤ 1.10	0.1-2000	FBP/FBM	Cu
SH-140WAL...PM	WR62	11.9-18.0	≤ 1.10	0.1-1000	FBP/FBM	Cu
SH-180WAL...PM	WR51	14.5-22.0	≤ 1.10	0.1-1000	FBP/FBM	Cu
SH-220WAL...PM	WR42	17.6-26.7	≤ 1.10	0.1-600	FBP/FBM	Cu
SH-260WAL...PM	WR34	21.7-33.0	≤ 1.10	0.1-600	FBP/FBM	Cu
SH-320WAL...PM	WR28	26.5-40.0	≤ 1.10	0.1-500	FBP/FBM	Cu
SH-400WAL...	WR22	32.9-50.1	≤ 1.15	0.1-300	FUGP	Cu
SH-500WAL...	WR19	39.2-59.6	≤ 1.15	0.1-300	FUGP	Cu
SH-620WAL...	WR15	49.8-75.8	≤ 1.15	0.1-300	FUGP	Cu
SH-740WAL...	WR12	60.5-91.9	≤ 1.15	0.1-300	FUGP	Cu
SH-900WAL...	WR10	73.8-112	≤ 1.15	0.1-300	FUGP	Cu
SH-1200WAL...	WR8	92.2-140	-	0.1-100	FUGP	Cu
SH-1400WAL...	WR7	113-173	-	0.1-100	FUGP	Cu
SH-1800WAL..	WR5	145-220	-	0.1-100	FUGP	Cu
SH-2200WAL...	WR4	172-261	-	0.1-50	FUGP	Cu
SH-2600WAL...	WR3	217-330	-	0.1-50	FUGP	Cu

STRAIGHT WAVEGUIDE

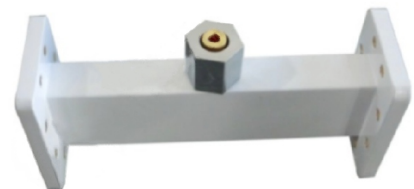
Double Ridge Straight Waveguide



ELECTRICAL CHARACTERISTICS:

Part No.	WG Type (EIA)	Freq Range (GHz)	VSWR	Standard Length Range...(mm)	Flange	Material
SH-84DRWAL...PM	WRD84	0.84-2	≤ 1.15	0.1-500	FP/FM	Al
SH-150DRWAL...PM	WRD150	1.5-3.6	≤ 1.15	0.1-500	FP/FM	Al
SH-200DRWAL...PM	WRD200	2-4.8	≤ 1.15	0.1-500	FP/FM	Al
SH-250DRWAL...PM	WRD250	2.6-7.8	≤ 1.15	0.1-500	FP/FM	Al
SH-350DRWAL...PM	WRD350	3.5-8.2	≤ 1.15	0.1-500	FP/FM	Al
SH-475DRWAL...PM	WRD475	4.75-11	≤ 1.15	0.1-500	FP/FM	Cu
SH-500DRWAL...PM	WRD500	5-18	≤ 1.15	0.1-500	FP/FM	Cu
SH-580DRWAL...PM	WRD580	5.8-16	≤ 1.15	0.1-500	FP/FM	Cu
SH-650DRWAL...PM	WRD650	6.5-18	≤ 1.15	0.1-500	FP/FM	Cu
SH-750DRWAL...PM	WRD750	7.5-18	≤ 1.15	0.1-500	FP/FM	Cu
SH-700DRWAL...PM	WRD700	7-18.5	≤ 1.15	0.1-500	FP/FM	Cu
SH-1100DRWAL...PM	WRD110	11-26.5	≤ 1.2	0.1-200	FP/FM	Cu
SH-1800DRWAL...PM	WRD180	18-40	≤ 1.2	0.1-200	FP/FM	Cu

Inflatable Straight Waveguide



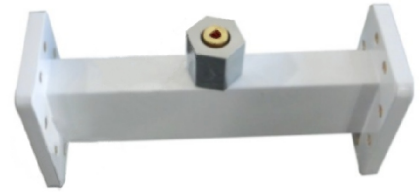
ELECTRICAL CHARACTERISTICS:

Part No.	WG Type (EIA)	Freq Range (GHz)	VSWR	Standard Length Range...(mm)	Flange	Material
SH-3QWAL...PM	WR2300	0.32-0.49	≤ 1.05	200	FDP/FDM	Al
SH-4QWAL...PM	WR2100	0.35-0.53	≤ 1.05	200	FDP/FDM	Al
SH-5QWAL...PM	WR1800	0.41-0.62	≤ 1.05	200	FDP/FDM	Al
SH-6QWAL...PM	WR1500	0.49-0.75	≤ 1.05	200	FDP/FDM	Al
SH-8QWAL...PM	WR1150	0.64-0.98	≤ 1.05	200	FDP/FDM	Al
SH-9QWAL...PM	WR975	0.75-1.15	≤ 1.05	200	FDP/FDM	Al
SH-12QWAL...PM	WR770	0.96-1.46	≤ 1.05	100	FDP/FDM	Al
SH-14QWAL...PM	WR650	1.13-1.73	≤ 1.05	100	FDP/FDM	Al
SH-18QWAL...PM	WR510	1.45-2.20	≤ 1.05	100	FDP/FDM	Al
SH-22QWAL...PM	WR430	1.72-2.61	≤ 1.05	100	FDP/FDM	Al
SH-26QWAL...PM	WR340	2.17-3.30	≤ 1.05	100	FDP/FDM	Al
SH-32QWAL...PM	WR284	2.60-3.95	≤ 1.05	100	FDP/FDM	Al
SH-40QWAL...PM	WR229	3.22-4.90	≤ 1.05	100	FDP/FDM	Al
SH-48QWAL...PM	WR187	3.94-5.99	≤ 1.05	100	FDP/FDM	Al
SH-58QWAL...PM	WR159	4.64-7.05	≤ 1.05	100	FDP/FDM	Al

STRAIGHT WAVEGUIDE

Inflatable Straight Waveguide

(Continued)



ELECTRICAL CHARACTERISTICS:

Part No.	WG Type (EIA)	Freq Range (GHz)	VSWR	Standard Length Range...(mm)	Flange	Material
SH-70QWAL...PM	WR137	5.38-8.17	≤ 1.10	50	FDP/FDM	Cu
SH-84QWAL...PM	WR112	6.57-9.99	≤ 1.10	50	FBP/FDM	Cu
SH-100QWAL...PM	WR90	8.20-12.40	≤ 1.10	50	FBP/FDM	Cu
SH-120QWAL...PM	WR75	9.84-15.0	≤ 1.10	50	FBP/FDM	Cu
SH-140QWAL...PM	WR62	11.9-18.0	≤ 1.10	50	FBP/FDM	Cu
SH-180QWAL...PM	WR51	14.5-22.0	≤ 1.10	50	FBP/FDM	Cu
SH-220QWAL...PM	WR42	17.6-26.7	≤ 1.10	50	FBP/FDM	Cu
SH-260QWAL...PM	WR34	21.7-33.0	≤ 1.10	50	FBP/FDM	Cu
SH-320QWAL...PM	WR28	26.5-40.0	≤ 1.10	50	FBP/FDM	Cu

Inflatable Mouth Specifications

Description	Self-Locking Type	Agnail Clamp Type	Pagoda Clamp Type	Thread Type
Outline Drawings				
Inner Diameter(mm)	Φ3.3	Φ9	Φ18	Φ8
Outer Diameter(mm)	Φ6.4	Φ16	Φ28	M14
Inner Diameter of Inflatable Tube(mm)	Φ4	Φ12	Φ26	Φ10
Outer Diameter of Inflatable Tube(mm)	Φ6	Φ16	Φ30	Φ14

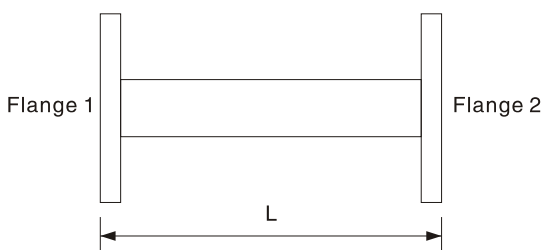
STRAIGHT WAVEGUIDE

Shinhom Microwave offers a standard product line of straight waveguides covering waveguide sizes WR10 thru WR2300. We also supply other special configurations to meet customer's specific requirements. For more information please contact us and discuss your needs with our sales engineer.



ELECTRICAL CHARACTERISTICS:

Part No.	Freq Range (GHz)	VSWR (Max)	WG type		Flange	Material
			IEC	EIA		
SH-3WAL...	0.32-0.49	1.10	R3	WR2300	FDP/FDM	Al
SH-4WAL...	0.35-0.53	1.10	R4	WR2100	FDP/FDM	Al
SH-5WAL...	0.41-0.62	1.10	R5	WR1800	FDP/FDM	Al
SH-6WAL...	0.49-0.75	1.10	R6	WR1500	FDP/FDM	Al
SH-8WAL...	0.64-0.98	1.10	R8	WR1150	FDP/FDM	Al
SH-9WAL...	0.75-1.15	1.10	R9	WR975	FDP/FDM	Al
SH-12WAL...	0.96-1.46	1.05	R12	WR770	FDP/FDM	Al
SH-14WAL...	1.13-1.73	1.05	R14	WR650	FDP/FDM	Al
SH-18WAL...	1.45-2.20	1.05	R18	WR510	FDP/FDM	Al
SH-22WAL...	1.72-2.61	1.05	R22	WR430	FDP/FDM	Al/Cu
SH-26WAL...	2.17-3.30	1.05	R26	WR340	FDP/FDM	Al/Cu
SH-32WAL...	2.60-3.95	1.05	R32	WR284	FDP/FDM	Al/Cu
SH-40WAL...	3.22-4.90	1.05	R40	WR229	FDP/FDM	Al/Cu
SH-48WAL...	3.94-5.99	1.05	R48	WR187	FDP/FDM	Al/Cu
SH-58WAL...	4.64-7.05	1.05	R58	WR159	FDP/FDM	Al/Cu
SH-70WAL...	5.38-8.17	1.05	R70	WR137	FDP/FDM	Al/Cu
SH-84WAL...	6.57-9.99	1.05	R84	WR112	FBP/FBM/FBE	Al/Cu
SH-100WAL...	8.20-12.40	1.05	R100	WR90	FBP/FBM/FBE	Al/Cu
SH-120WAL...	9.84-15.0	1.05	R120	WR75	FBP/FBM/FBE	Al/Cu
SH-140WAL...	11.9-18.0	1.05	R140	WR62	FBP/FBM/FBE	Al/Cu
SH-180WAL...	14.5-22.0	1.05	R180	WR51	FBP/FBM/FBE	Al/Cu
SH-220WAL...	17.6-26.7	1.05	R220	WR42	FBP/FBM/FBE	Al/Cu
SH-260WAL...	21.7-33.0	1.05	R260	WR34	FBP/FBM/FBE	Al/Cu
SH-320WAL...	26.3-40.0	1.05	R320	WR28	FBP/FBM/FBE	Al/Cu
SH-400WAL...	32.9-50.1	1.10	R400	WR22	FUGP	Cu
SH-500WAL...	39.2-59.6	1.10	R500	WR19	FUGP	Cu
SH-620WAL...	49.8-75.8	1.10	R620	WR15	FUGP	Cu
SH-740WAL...	60.5-91.9	1.10	R740	WR12	FUGP	Cu
SH-900WAL...	73.8-112	1.10	R900	WR10	FUGP	Cu



Ordering Information

Example Part No: SH - 100 WAL 200 P M C
 Shinhom Microwave ————
 WG type: R100 ————
 Product Type: Straight WG ————
 Straight WG Length: L=200mm ————
 Material: A=Aluminum
 C=Copper
 Flange 2 Type: M=FBM100
 Flange 1 Type: P=FBP100

- Flange type: Multiple types available – see Shinhom Microwave Flanges page
- Finish: Corrosion protection plus black/grey top coat